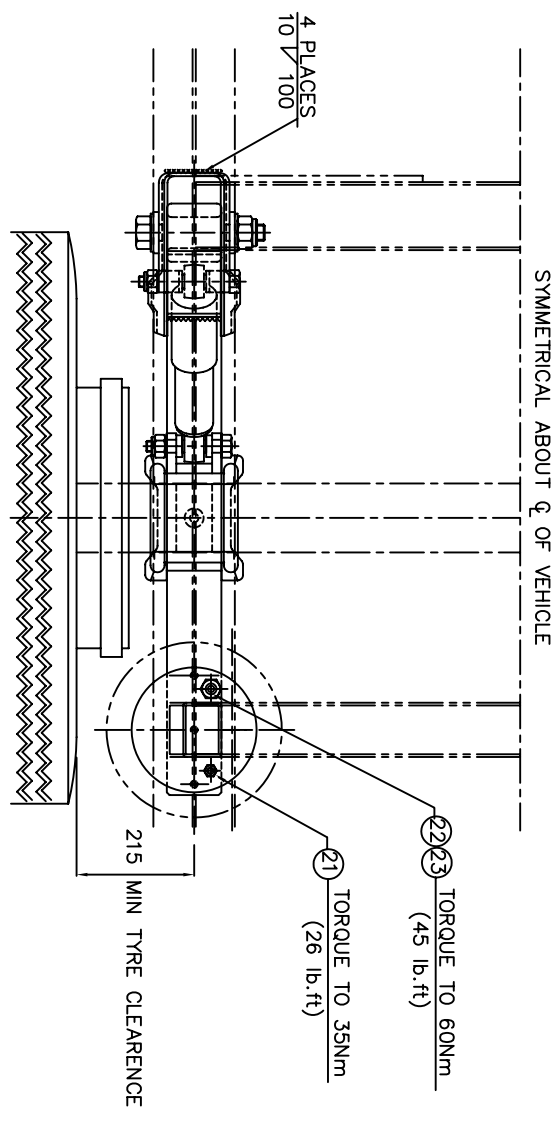
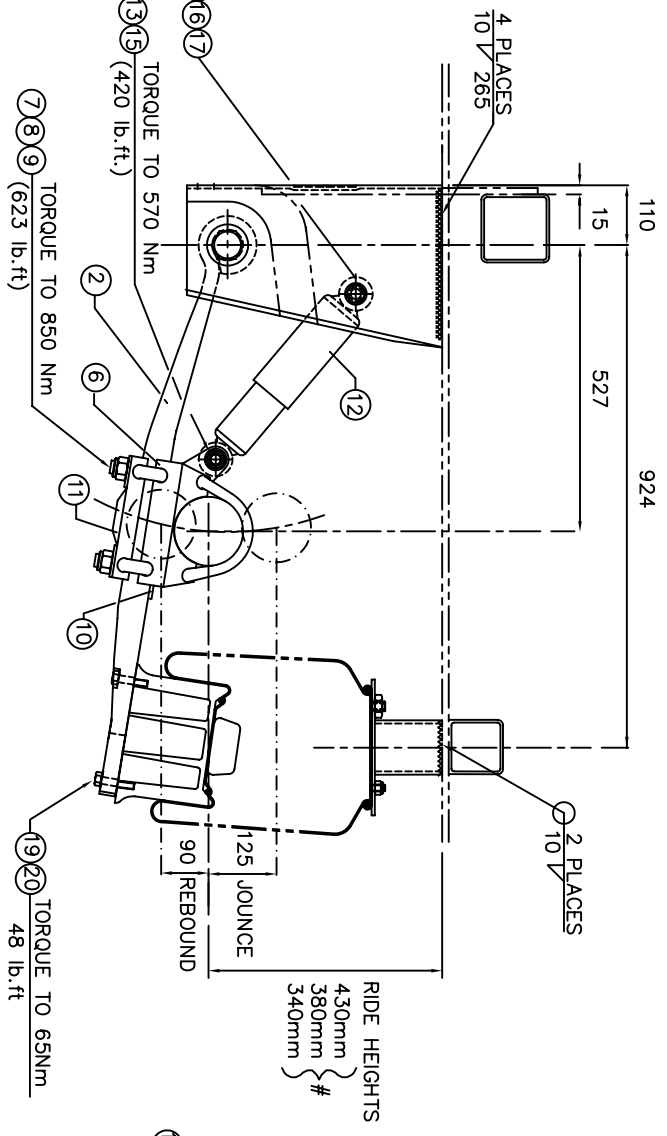
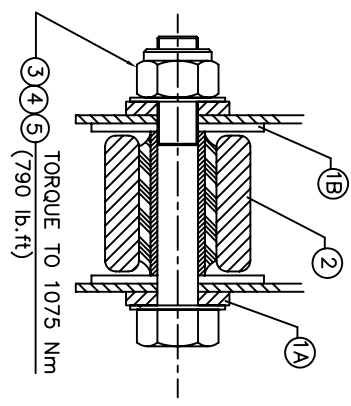
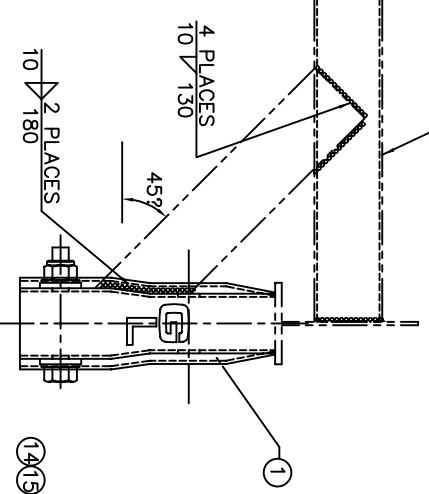


NOTES
 CROSSMEMBER SPECIFICATION APPLIES TO INSTALLATION USING STRAIGHT BEAM PART No. 12135, ONLY. FOR CRANKED BEAM SPECIFICATION- SEE SHEET 2.



CUSTOMER TO SUPPLY CROSSMEMBER MINIMUM SECTION 125x125 R.H.S.-1 OFF WITH 2 OFF BRACINGS, MINIMUM 130x12 FLATS

SYMMETRICAL ABOUT C OF VEHICLE



FOR SUSPENSION GEOMETRY SEE DWG NO. 18700

| | |
|-----------------------------------|---------------------------|
| DO NOT SCALE IF IN DOUBT ASK | DESIGNED FOR CUSTOMER USE |
| ALL DIMENSIONS ARE IN MILLIMETRES | UNSPECIFIED TOLERANCES |
| ORIGINAL FRAME SIZE 809mm x 562mm | ± 0.2mm |
| | ± 0.5mm |
| | ± 0.7mm |
| | ± 1.0mm |
| | ± 1.5mm |
| | ± 2.0mm |
| | ± 3.0mm |
| | ± 4.0mm |
| | ± 5.0mm |
| | ± 6.0mm |
| | ± 7.0mm |
| | ± 8.0mm |
| | ± 9.0mm |
| | ± 10.0mm |
| | ± 12.0mm |
| | ± 15.0mm |
| | ± 20.0mm |
| | ± 25.0mm |
| | ± 30.0mm |
| | ± 40.0mm |
| | ± 50.0mm |
| | ± 60.0mm |
| | ± 70.0mm |
| | ± 80.0mm |
| | ± 90.0mm |
| | ± 100.0mm |
| | ± 120.0mm |
| | ± 150.0mm |
| | ± 200.0mm |
| | ± 250.0mm |
| | ± 300.0mm |
| | ± 400.0mm |
| | ± 500.0mm |
| | ± 600.0mm |
| | ± 700.0mm |
| | ± 800.0mm |
| | ± 900.0mm |
| | ± 1000.0mm |

| | | | |
|--|-----|-------------|-------|
| TEMP PART NO | QTY | DESCRIPTION | NOTES |
| BILL OF MATERIALS | | | |
| DRAWN BY: F G REDD | | | |
| DATE: 21 FEB 95 | | | |
| CHECKED: _____ | | | |
| SCALE: 1:5 | | | |
| SUPERSEDES: _____ | | | |
| ESTIMATED WEIGHT: _____ | | | |
| ACTUAL WEIGHT: _____ | | | |
| DISPOSITION: _____ | | | |
| MATERIAL: _____ | | | |
| FINISH: _____ | | | |
| TITLE: INSTALATION PITS (S) SUSPENSION RANGE | | | |
| DRAWING NO. 18131 | | | |
| SHEET 1 OF 2 | | | |

GRANNING LYNX
 Gearing UK Ltd, Gearing Technology Centre
 57, Lymm Road, Lymm, Cheshire, WA11 2JN
 Tel: 01928 533333 Fax: 01928 533334
 Email: sales@granninglynx.co.uk
 Drawing UK Ltd, Gearing Technology Centre
 57, Lymm Road, Lymm, Cheshire, WA11 2JN
 Tel: 01928 533333 Fax: 01928 533334
 Email: sales@granninglynx.co.uk

